



pure power

Alkitronic EF-S

Applications

- **alkitronic® EF-S** electrical torque multipliers for torques of 430 to 42,000 Nm (315 to 30,980 ft.lbs).
- **Consistent torque accuracy** on all international power supplies.
- **Precise shut-off torque** also operates with voltage-controlled portable generators.
- **Models alkitronic® EF-A** in angled design with high operating comfort in confined spaces for torques of 500 to 9,800 Nm (370 to 7,230 ft.lbs).

Advantages

- **Low running costs** due to maintenance-free, low-wear, brushless synchronous motor with excellent efficiency.
- **High motor speed:** Up to three times faster than conventional electrical torque multipliers.
- **Permanent higher joint quality** compared to ratchet torque tools by continuous rotation of the square drive.
- **Menu-guided intuitive operation**, with control and warning signals.
- **OLED-Display** anti-glare and high contrast - for perfect reading under all weather conditions.
- **Comfortable working** due to the 360° rotatable motor unit; in addition, hardly any reaction forces are transmitted to the user.

alkitronic® specials

- **Quality bolting** with torque/angle method.
- **Innovative motor protection** with automatic shutdown to ensure bolting quality.
- **Intelligent processor-controlled shut-off electronics** for constant exact reproduction of the preselected torque.
- **Repeat shut-off accuracy ± 2%** for the same bolting application.
- **Exceptionally robust** motor housing (aluminum alloy).
- **For safe, comfortable tool guidance, model-specific operating and holding handles are included** in the scope of delivery. These can be mounted as required at several fastening points provided.



Specifications

All alkitronic® electric torque multipliers have CE-certification. Universal AC input 100 V - 253 V, frequency 45 Hz - 66 Hz, power max. 1400 W. Protection category I.

Bolting programs

For user-specific applications, modular software packages can be optionally purchased.

Software suite 1: Torque controlled bolting (standard)

Software suite 2: Torque/angle procedure for high-quality bolting connections

Software suite 2

Premium: Torque/angle procedure with adjustable min./max. torque limitation

Software suite 3: Bolting with preset rotations and torque limit

Software suite 5: Bluetooth transmission via alkitronic® APP.

Documentation of the bolted joints (target-actual status, recording for each joint)

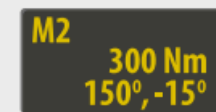
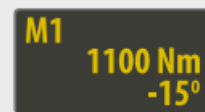
Software suite 1 is pre-installed in the basic equipment. The setting steps of the torque values are in increments of 10 Nm or 10 ft.lbs.

Display views

Software suite 1(mode 1) and software suite 2 (mode 2)

Mode 1 / M1 (Standard)

Mode 2 / M2 (Option)



Bolting via torque. Automatic release according to pre-set angle degrees.

Torque/angle procedure for high-quality bolting connections. Display example of pre-torque, angle and release angle.

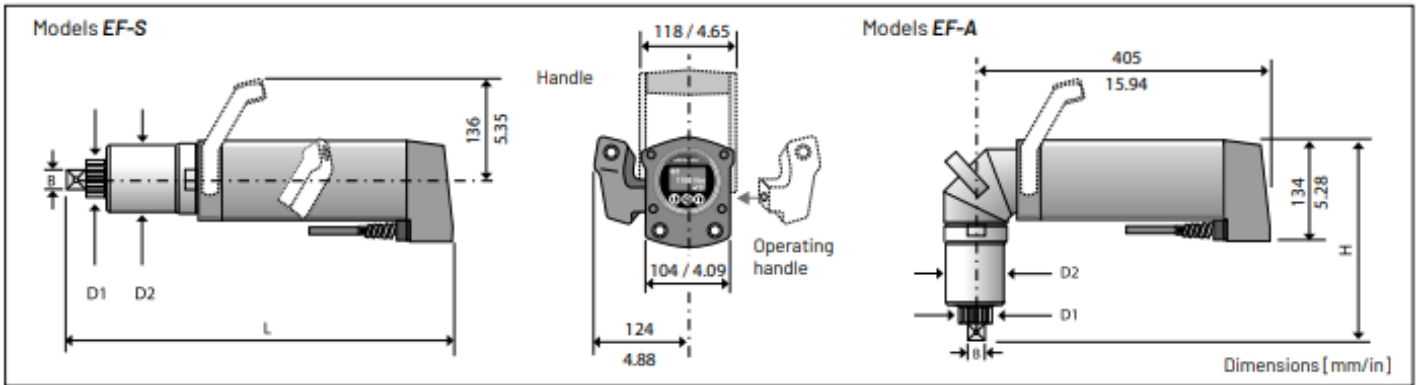
During the bolting process, the current torque value is shown in the display. Reaching the set value is indicated by an "OK". If the selected value cannot be achieved, the bolting operation is evaluated as "nOK".



electric torque multipliers

Alkitronic EF-S

Technival Data



Models EF-S

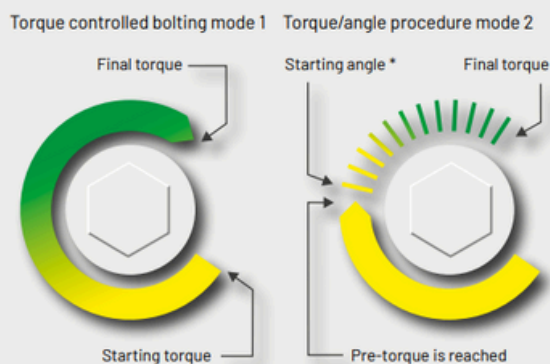
Type		EF-S 250	EF-S 300	EF-S 400	EF-S 600	EF-S 800	EF-S 1000	EF-S 2000	EF-S 4000
Torque range (approx.)*	Nm	430-2700	500-3100	500-4250	1150-6200	2000-7800	2050-9800	3500-20600	6200-42000
	ft.lbs	315-1990	370-2285	370-3135	850-4575	1475-5755	1510-7230	2580-15195	4575-30980
Square drive	B	1"	1 1/2"	1 1/2"	1 1/2"	1 1/2"	1 1/2"	2 1/2"	2 1/2"
Diameter (approx.)	D ₁	mm / in	54 / 2.13	72 / 2.83	72 / 2.83	72 / 2.83	91 / 3.58	SW 120 / A/F 4.7	SW 120 / A/F 4.7
Diameter (approx.)	D ₂	mm / in	85 / 3.35	98 / 3.86	98 / 3.86	109 / 4.29	133 / 5.24	173 / 6.8	275 / 10.83
Length (approx.)	L	mm / in	515 / 20.3	535 / 21	535 / 21	550 / 21.6	550 / 21.6	565 / 22.2	760 / 30
Weight without DMA** (approx.)		kg / lbs	13 / 29	14 / 31	14.5 / 32	16 / 35	19.5 / 43	27 / 59.5	60 / 132
Idle speed		rpm	10	8	6	5	4	3	1

Models EF-A

Type		EF-A 400	EF-A 600	EF-A 800	EF-A 1000
Torque range (approx.)*	Nm	500-4250	1150-6200	1060-8000	2050-9800
	ft.lbs	370-3135	850-4575	780-5900	1510-7230
Square drive	B	1 1/2"	1 1/2"	1 1/2"	1 1/2"
Diameter (approx.)	D ₁	mm / in	72 / 2.83	72 / 2.83	91 / 3.58
Diameter (approx.)	D ₂	mm / in	98 / 3.86	109 / 4.29	133 / 5.24
Height (approx.)	H	mm / in	320 / 12.6	350 / 13.8	380 / 15
Weight without DMA** (approx.)		kg / lbs	15.5 / 34	17.5 / 38.6	20 / 44
Idle speed		rpm	5	4	3

*) When loosening bolts, a higher torque (up to 20 %) may be necessary (release torque). We will be pleased to help you with your choice. **) Torque reaction arm

Scheme bolting programs



- Information on rotational angle setting for torque/angle method.
- The angle of rotation is specified by the design for the bolting connection.
- The angle of rotation can be determined individually and easily with **alkitronic® HSD**. We will gladly provide you with detailed product information.

Accessories: Remote control with operating handles



The **alkitronic® EF** bolting system. Extremely flexible with the **alkitronic®** remote control as an accessory: **alkitronic® FB - EF** - cable length 5 m or 10 m